

Why Do I Need An AA?

Custody Sergeants make the decision about who needs an Appropriate Adult. They follow guidelines which are outlined in the Police and Criminal Evidence Act (1984) Code C.

You are entitled to receive a copy of Code C or, if they are available, you can have an Easy Read Rights and Entitlements Booklet which will explain the role of the Appropriate Adult more.

Custody Sergeants can make the decision for you to have an Appropriate Adult if:

- You have mental health concerns
- You have a learning disability or difficulties
- You do not understand why you have been arrested or what is happening to you
- Any other reason makes them think you may need extra support whilst you're in custody

Do you have any concerns or experiences you would like to share about your time in custody?



Email us:
feedback@ylf.org.uk

Further Info About AA's

You can find out more about AA's at:
www.appropriateadult.org.uk



Contact YLF Today

01622 693459
enquiries@ylf.org.uk
www.ylf.org.uk



@ylf.org.uk



@ylfcharity



@ylfcharity



/company/ylfcharity



Full Member
National
Appropriate
Adult
Network

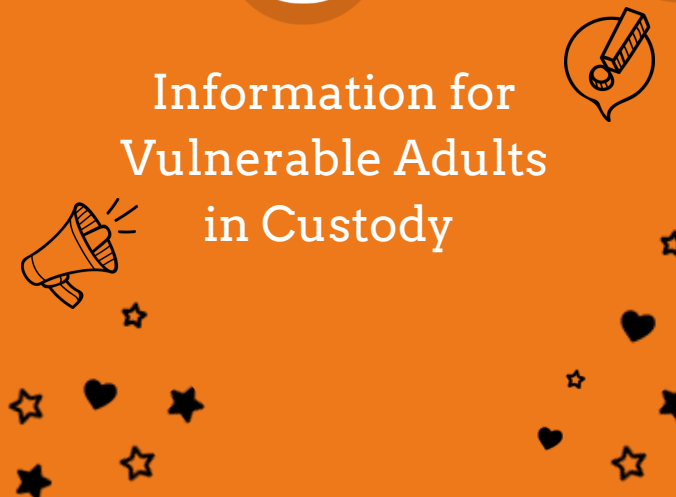


The Young Lives Foundation is a company limited by guarantee with charitable status. Registered in England & Wales. Company No 5999166. Registered Charity No 1119528.



Appropriate Adult Service

Information for
Vulnerable Adults
in Custody





About YLF

The Young Lives Foundation (YLF) is a leading charity in the South East of England commissioned to provide volunteer Appropriate Adults for children and vulnerable adults in custody. YLF volunteers are the heart of what we do. YLF volunteers give over 34,000 hours every year, making a huge impact in our local community and providing positive outcomes.

Our AA Service



Appropriate Adults (AA) in Kent are volunteers, this means that there is no payment and they donate their time for free to help others. A parent or carer can also be an Appropriate Adult. YLF provides AAs when no one else known to the young person or vulnerable adult is available.

We are here:

- To support, advise and assist you
- To ensure the police act fairly and respect your rights
- To help you communicate with the police
- To make sure you understand what is happening at the police station, including in the interview

Further Support

Details for services you can access

Kent Social Services (Mon-Fri 9am-5pm)	03000 41 11 11
Kent and Medway Social Services (Outside office Hours)	03000 41 91 91
Medway Social Services (Mon-Fri 9am-5pm)	01634 334 466
Shelter - Homelessness or advice on housing	0808 800 4444
Porchlight - Supported accommodation for 16-24 years	0800 567 7699
Beyond Homelessness - Medway and Kent Charity	01634 819649
Kent and Medway 24 hours Mental Health Matters	0800 107 0160
Release the Pressure 24 hour support	Text 'Kent' to 85258
Samaritans	116 123
MIND - Mental Health Charity	0300 123 3393
DAVSS - Domestic Abuse Support	01892 570538
Turning Point Medway - Advice on Drug and Alcohol Misuse	0300 123 1560

The AA's Responsibilities

What your AA can do:



- Be with you for any procedure that you are involved in
- Ensure you have your rights read to you again whilst they are with you and double check you understand them
- Request a solicitor for you
- Be with you during your interview and ensure it is being conducted properly and fairly
- Help you with communication
- Represent you when your detention is being reviewed
- Be with you for charging, strip searching or any other kind of search
- Ask the police questions such as; can you see the nurse, can you have a phone call to notify someone of your arrest and how are you getting home

What your AA can't do:



- Speak or give answers for you
- Give you legal advice
- Talk about the alleged offence
- Tell you the likely outcome
- Tell you when you will leave custody
- Give you a lift home